

Automatic fire extinguishing equipment (New Arrival) for control panel and switch board Type: RSC0601

Quick detect and extinguish fires inside the board

1 Automatic activation by flame detector

This flame detector is UV detection method.
Abnormalities occurred inside the board can be detected
in as little as 0.5 seconds.



Burnt board

2 Compact design

It's a cheap compact design to install inside the board.
It can be installed on the PIN rail as it is.

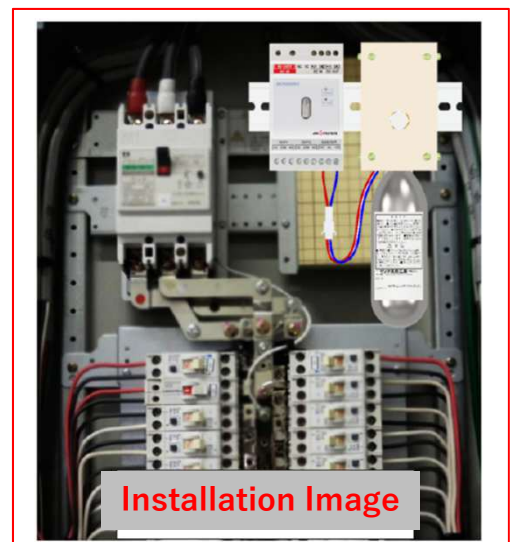


3 Clean fire extinguishing agent

Because of the suffocation extinguishing by carbon dioxide gas.
There is no staining by extinguishing agent after radiation,
and it's possible to keep it clean .

Automatic fire extinguishing equipment
for control panel and switch board (NEW)
RSC0601

Please check it out !
You can access product introduction and
experimental videos from this 2D code.



Installation Image

Automatic fire extinguishing equipment (New Arrival) for control panel and switch board

Type: RSC0601

POINT.1 Why is the ultraviolet (UV) detection method effective?

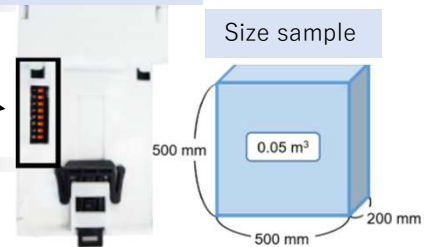
1. The method of detecting heat and smoke accumulated at the top spot is limited to the installation position and take time to detect.
2. The infrared rays are emitted from all objects, and abnormal detection is not possible unless the infrared method captures a considerable amount of light. It is difficult to detect abnormalities quickly from the reflected light inside the board.
3. The UV method can detect abnormalities with a small amount of light, so it's possible to detect quickly abnormalities even from the reflected light inside the board.

POINT.2 Delay timer setting

It is possible to set the time of the delay timer according to the installation environment. (Minimum 0.5 sec, 1 to 31 sec)

Sensor buck side

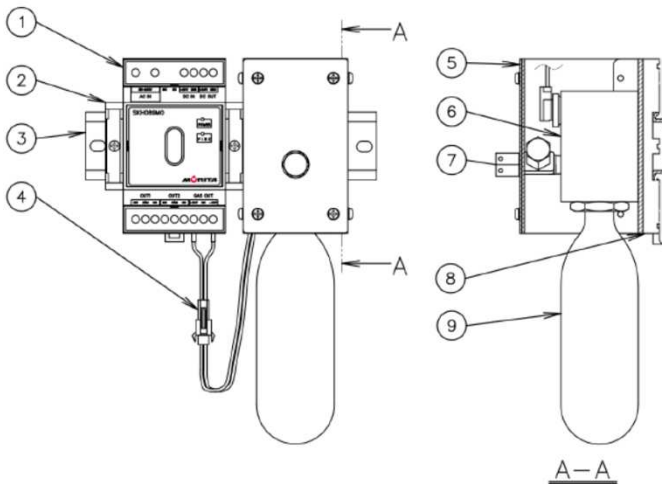
Size sample



POINT.3 Protective volume

Protective volume is 0.05m³ per one cylinder (co2 gas 60grams)

Structural diagram



- ①Flame detector (UV)
- ②Stop angle (metal parts)
- ③DIN rail
- ④Connector
- ⑤Operation device cover
- ⑥Operation parts set
- ⑦ Radiation device
- ⑧DIN setting plate
- ⑨CO2 cylinder

Parts List

Exchange recommended in 8 to 10 years

Flame sensor

CO2 cylinder

Operation device



Product Specification

Extinguishing agent	Carbon dioxide(CO2)
Flame detector	Ultraviolet(UV) detection method
Power source / Voltage	AC85V~240V DC24V
Transfer output	2c Relay contact point
Size (highest×wide×depth)mm	190×125×90
Total mass	about 1,100g (0.495lb)

MORITA MIYATA CORPORATION

TOC ARIAKE WEST TOWER 19F, 3-5-7 ARIAKE, KOTO-KU,
TOKYO, JAPAN 135-0063

FAX:81-3-3599-3174

FAX:81-3-3527-6425

www.moritamiyata.com

Distributor